

Easy to use and easy to deploy

Runs on any Pocket PC 2003 device

Pack & Ship

Receipt of Goods

RMA

Inventory Physical Counts

Strong serial & lot tracking with ranges

Seamless integration with Sage MAS500

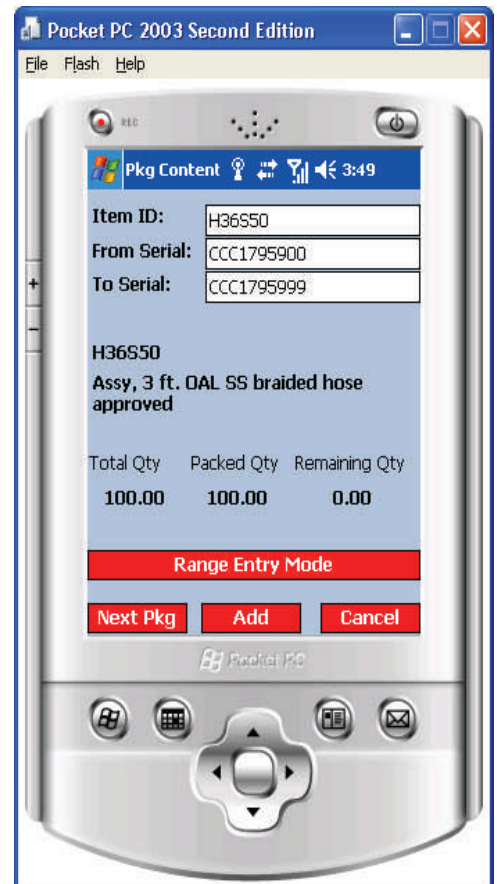
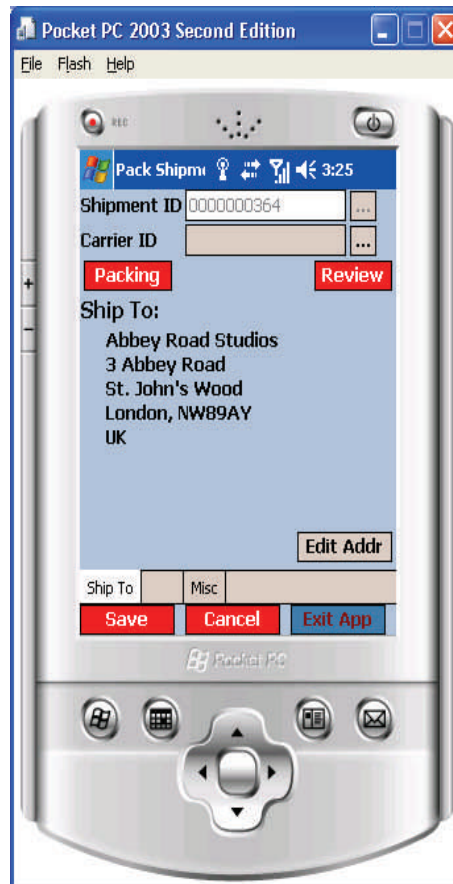
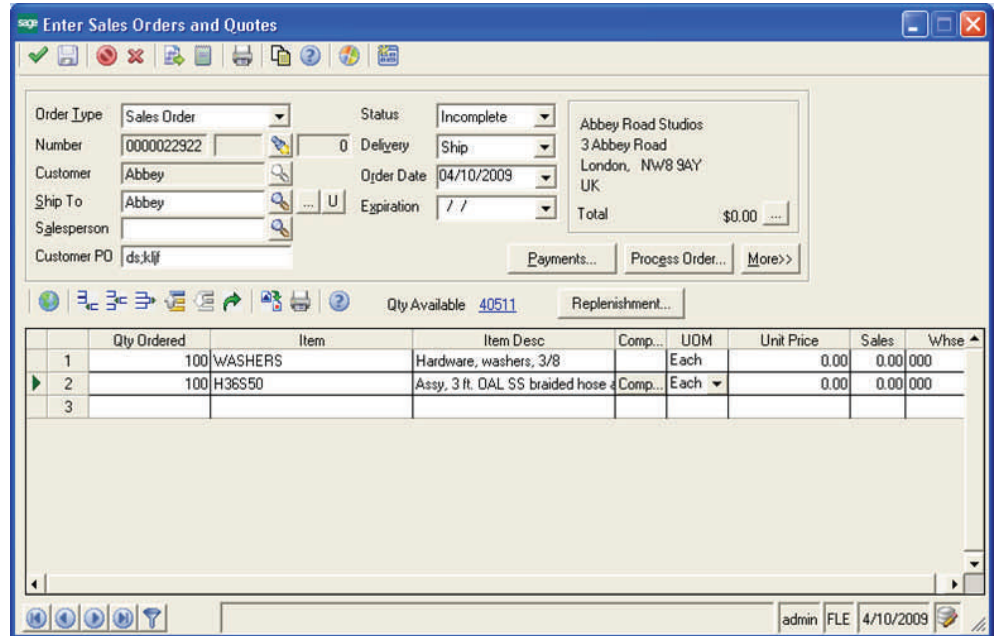
Requires wireless network

Low total cost of ownership

Waterview IT

Norwell, MA - King William, VA

Phone: 781.681.7075  
sales@waterviewit.com  
www.waterviewit.com



## **Rapid-IT Pack & Ship**

This applet allows warehouse personnel to pack and ship all in one step. The packer scans the Sales Order Number or the Shipment Number from the shipping document. The user creates a new package and packs the items, typically on a pallet. A part number is scanned which brings up a distribution screen to enter the serial numbers or lot tracked numbers, if necessary. This applet allows for entering ranges of serial numbers. Once all items and distributions have been entered and validated, a carrier can be selected. Shipping addresses can be verified and changed. A review function is available. At completion, the user saves the shipment and it is then available in the Sage MAS 500 client for editing, committal and posting as necessary. The Pack List Summary with Contents labels can be printed to affix to the pallet for shipment and identification by the customer.

## **Rapid-IT Receipt of Goods**

With this applet, a receiver scans a printed receiver and scans the part numbers for receipt. Quantities received will then be entered for each part. If the parts are serialized, the distribution grid will be accessed and it will allow for scanning an individual serial number or a range of serial numbers from the box. The system will validate that the serial numbers are not yet in the system and save the record if valid. Once all parts from the shipment have been scanned and validated, the receipt will be saved as an un-posted Purchase Order Receipt which will be available for modification and posting by the front office personnel in the Sage MAS 500 client application.

## **Rapid-IT RMA**

With this applet, the receiver will receive the RMA box and scan the RMA number to begin the Customer Return. The item number will be scanned and the serial number(s) if applicable will also be scanned or entered into the distribution grid. The system will validate that the serial numbers exist on a shipment from Sage MAS 500 within the last year. Once the information has been entered, the receiver will save the Customer Return and will allow the Sage MAS 500 client to post the customer return in the front office.

## **Rapid-IT Physical Count**

With this applet, physical count sheets can be printed and scanned. Count entries are entered and uploaded to Sage MAS 500 for processing. This option can be used for cycle counting and full physicals.

## **Rapid-IT Solutions**

For more information contact [sales@waterviewit.com](mailto:sales@waterviewit.com)